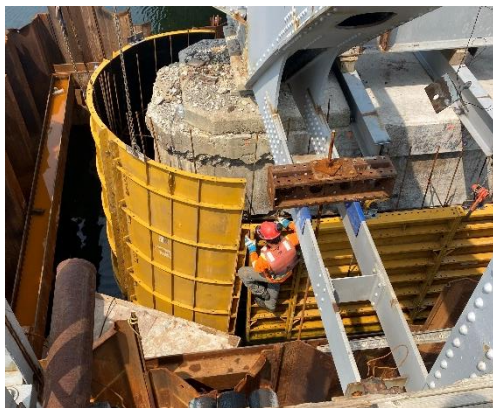


## EEL RIVER (BAR) BRIDGE NO.1

**LOCATION:** NB134 DALHOUSIE, NB

**CONSTRUCTION:** WORK CONSISTED OF REMOVING A SECTION OF THE DECK OVER THE CENTER PIER OF THE NEAR 70-YEAR-OLD BRIDGE TO INSTALL A



SHEETPILE COFFERDAM, AND REPAIR THE DETERIORATING PIER STRUCTURE. DIVERS WERE SUBCONTRACTED TO AID IN PREPERATION AND INSTALLATION OF FORMWORK BELOW WATERLINE. OVER 100M<sup>3</sup> OF CONCRETE WAS ADDED TO THE PIER USING BOTH, CONVENTIONAL AND TREMIE PLACEMENT PROCEDURES. NEW

FLOOR BEAMS WERE MANUFACTURED AND INSTALLED, A NEW EXPANSION JOINT WAS SET INTO PLACE AND A NEW CONCRETE DECK SECTION WAS CAST. NOTABLE ITEMS INCLUDE NEW ARCH TIE SUPPORT HANGERS, NEW TIMBER SIDEWALK FOR LENGTH OF BRIDGE.



**OWNER:** DEPARTMENT OF TRANSPORTATION AND INFRASTRUCTURE

**ENGINEERING:** HILCON LIMITED

**JOB REFEREANCE:** NBDTI # 21-0102

**DATE:** MAY TO NOVEMBER 2021

**UNIQUENESS:** COFFERDAM NEEDED TO BE INSTALLED AROUND THE CENTER PIER, ACCESS FOR EQUIPMENT TO DRIVE AND REMOVE PILES WAS LIMITED TO THE BRIDGE DECK AND OBSTICALES INCLUDING THE STEEL ARCH BEAMS NEED TO BE AVOIDED.

ATLANTIC UNDERGROUND SERVICES LTD.

425 PINE GLEN RD • RIVERVIEW, N.B. • E1B 4J8 • (506)387-8160

INFO@AUSLTD.COM