

# MULTI-PLATE CULVERT WINDSOR RAILROAD OVERPASS

**LOCATION:** WINDSOR, NS

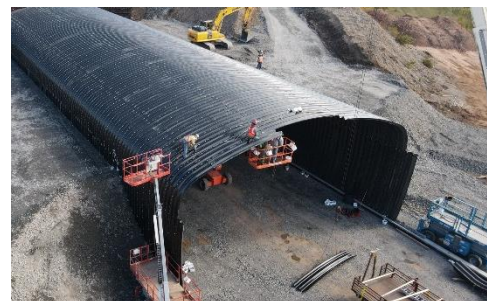
**CONSTRUCTION:** AUS WAS TASKED WITH ERECTING A MULTI-PLATE STRUCTURE FOR THE HIGHWAY TWINNING PROJECT ON NS101. THE PROJECT WAS UNDERTAKEN OVER TWO PHASES TO ENSURE TRAFFIC ON THE BUSY HIGHWAY WAS UNINTERUPTED AND REQUIRED THE CONSTRUCTION OF A 94M LONG OVERPASS THAT WAS 16.5M WIDE TO ALLOW FOR TRAIN PASSAGE UNDER THE HIGHWAY. THE NEW MULTI-PLATE STRUCTURE CONSISTED OF 861 COATED STEEL PLATES 3/8" THICK AND OVER 23,500 BOLTED CONNECTIONS TORQUED TO 250 FT/LBS

**OWNER:** NSTIR

**CLIENT:** DEXTER CONSTRUCTION COMPANY LTD.



**JOB REFERENCE:** HAN 130  
**DATE:** PHASE 1 SPRING 2020,  
PHASE 2 FALL 2020



**UNIQUENESS:** THE SHAPE OF THIS MULTI-PLATE STRUCTURE AND THE COATING ON THE STEEL PLATES MADE IT MORE CHALLENGING TO ERECT BUT WITH OUR EXPIRENCE IN THIS INDUSTRY THE PROJECT WAS COMPLETED WITHOUT COMPLICATION.

ATLANTIC UNDERGROUND SERVICES LTD.  
425 PINE GLEN RD • RIVERVIEW, N.B. • E1B 4J8 • (506)387-8160  
INFO@AUSLTD.COM