

## EPOXY GROUTING CRANE RAIL

**LOCATION:** HALIFAX, NS

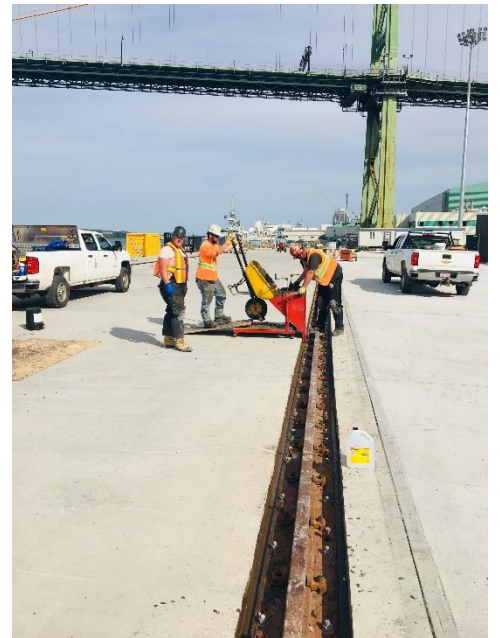
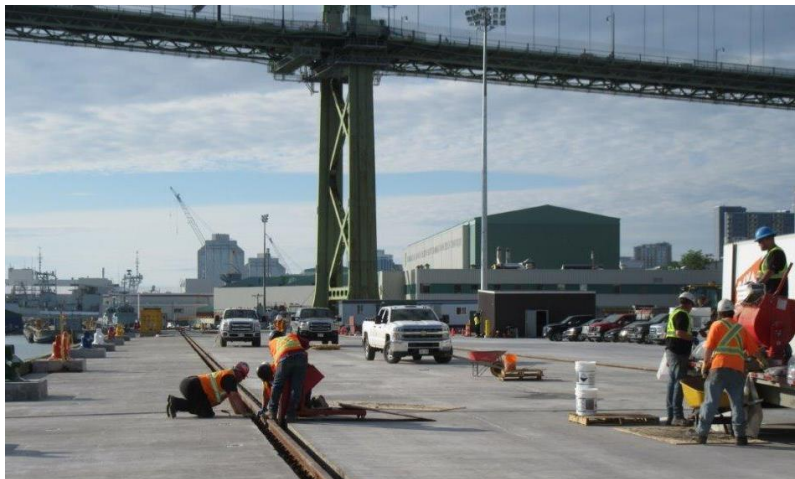
**CONSTRUCTION:** AUS WAS TASKED WITH PLACING A THREE COMPONENT, HIGH FLOW, HIGH STRENGTH, EXPANSIVE EPOXY GROUT UNDER 460 METERS OF RAIL. A TOTAL VOLUME OF 11.7 CUBIC METERS (276 UNITS) WAS MIXED AND PLACED IN LESS THEN 3 DAYS.

**OWNER:** DEFENCE DEPARTMENT CANADA

**CLIENT:** DEXTERS

**JOB REFERENCE:** Q#6698B

**DATE:** JUNE 2019



**UNIQUENESS:** THE EPOXY GROUT HAD TO TRAVEL UNDER A 300MM WIDE PLATE TO FILL A VOID 45MM DEEP. THERE WAS A 50MM GAP ON EACH SIDE OF THE PLATE TO

BE USED FOR PLACEMENT. A SPECIALIZED HEADBOX WAS CONSTRUCTED SO ENOUGH HEAD PRESSURE COULD BE OBTAINED TO HAVE THE GROUT TRAVEL FROM ONE SIDE OF THE PLATE TO THE OTHER.

ATLANTIC UNDERGROUND SERVICES LTD.

425 PINE GLEN RD • RIVERVIEW, N.B. • E1B 4J8 • (506)387-8160

INFO@AUSLTD.COM